

J&M Philippides Developments



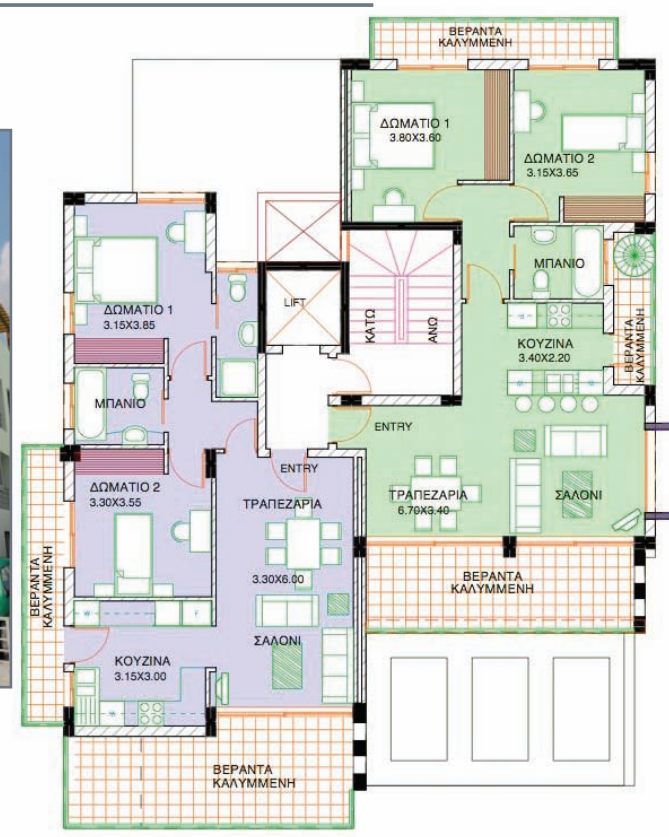
ground floor plan

G



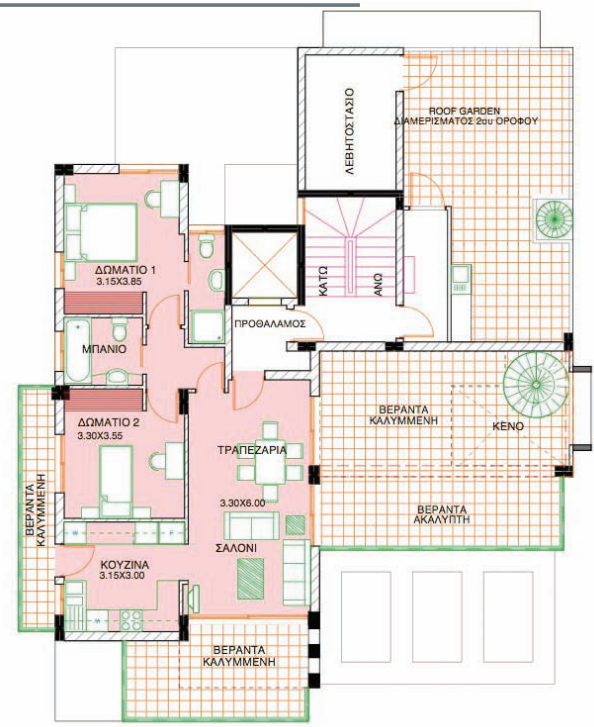
second floor plan

2



third floor plan

3



first floor plan

1



apartment characteristics

Nicholas Court Panthea

Αρ. Διαμ.	Αρ. Υπνοδωμ.	Καλυμ. χώροι m ²	Καλυμμένοι κοινοχρ. χώροι m ²	Καλυμ. βεράντες m ²	Ακάλυπτες βεράντες m ²	Αποθικ. χώρος m ²	Κήπος οροφής m ²	Καλυμ. χώρος σταθμ.	Ολικόν εμβαδόν m ²
1	1 (2)	54	8	12	77	18	-	yes	169
101	2	76	10	24	21	4	-	yes	135
102	2	76	10	22	24	4	-	yes	136
201	2	76	10	24	0	4	-	yes	114
202	2 (3)	76	10	22	0	12	34	yes	154
301	2	78	9	19	40	4	71	yes	221

The project is situated at Panthea area near Grammar School with view to the sea and mountains. The prime location makes it an ideal place of residence as it combines the quietness of a peaceful neighborhood with the proximity and the easy access to Limassol-Nicosia motorway gives an easy access to all the facilities of a major town.

roof garden plan

RG

