

A. P. Antoniou Developments

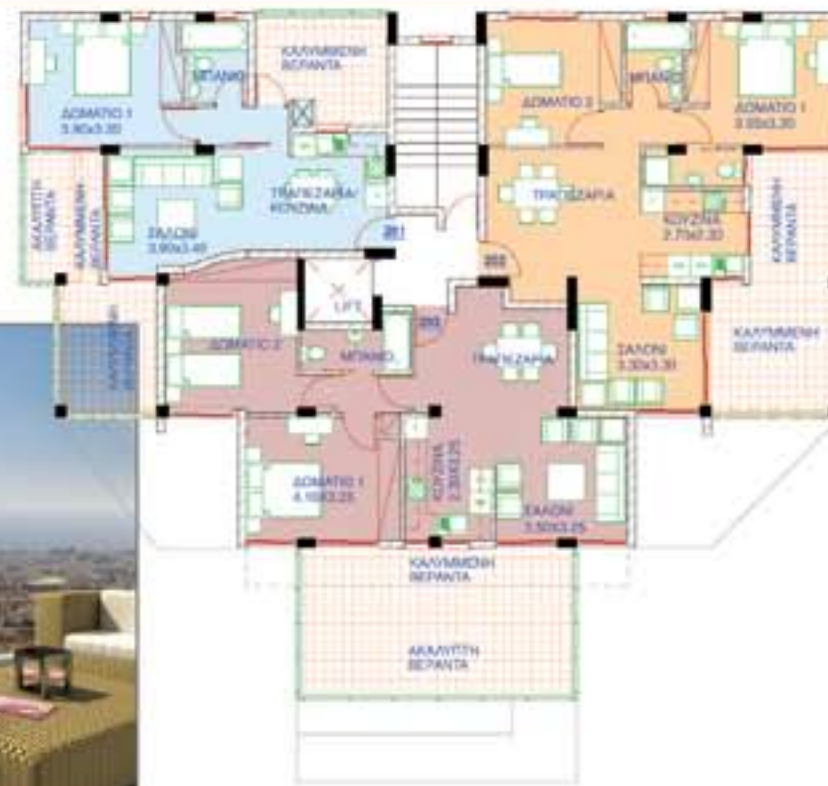
ground floor plan



G



second floor plan



2



Kallithea Court

Ayia Phyla

The project is a modern construction opposite green area, situated at Ayia Phyla area in a beautiful natural setting with panoramic view to the sea and Akrotiri. The prime location makes it an ideal place of residence as it combines the quietness of a peaceful neighborhood with the proximity and the easy access to Limassol-Nicosia motorway gives an easy access to all the facilities of a major town.



first floor plan



1



third floor plan



3



Kallithea Court, Ayia Phyla
apartment characteristics

Αρ. Διπ.	Αρ. Υπνοδωμ.	Καλυπ. χώρος m ²	Καλυπ. κοινωφ. χώρος m ²	Καλυπ. βεράντες m ²	Ακάλυπτες βεράντες m ²	Αποθκ. χώρος m ²	Καλυπ. χώρος στοθμ.	Ολική επιφάνεια m ²
Flat No.	No. of bedrooms	Covered area m ²	Covered common areas m ²	Covered verandas m ²	Uncovered verandas m ²	Storage room m ²	Covered parking place	Total area m ²
101	2	76	7	18	12	6	yes	126
102	2	80	7	22	13	6	yes	135
103	2	84	7	9	11	6	yes	124
201	1 (2)	63	5	23	5	6	yes	97
202	2	79	8	22	0	6	yes	120
203	2	78	8	12	18	7	yes	132
301	2	86	10	21	18	8	yes	153
302	3	98	11	20	18	7	yes	164